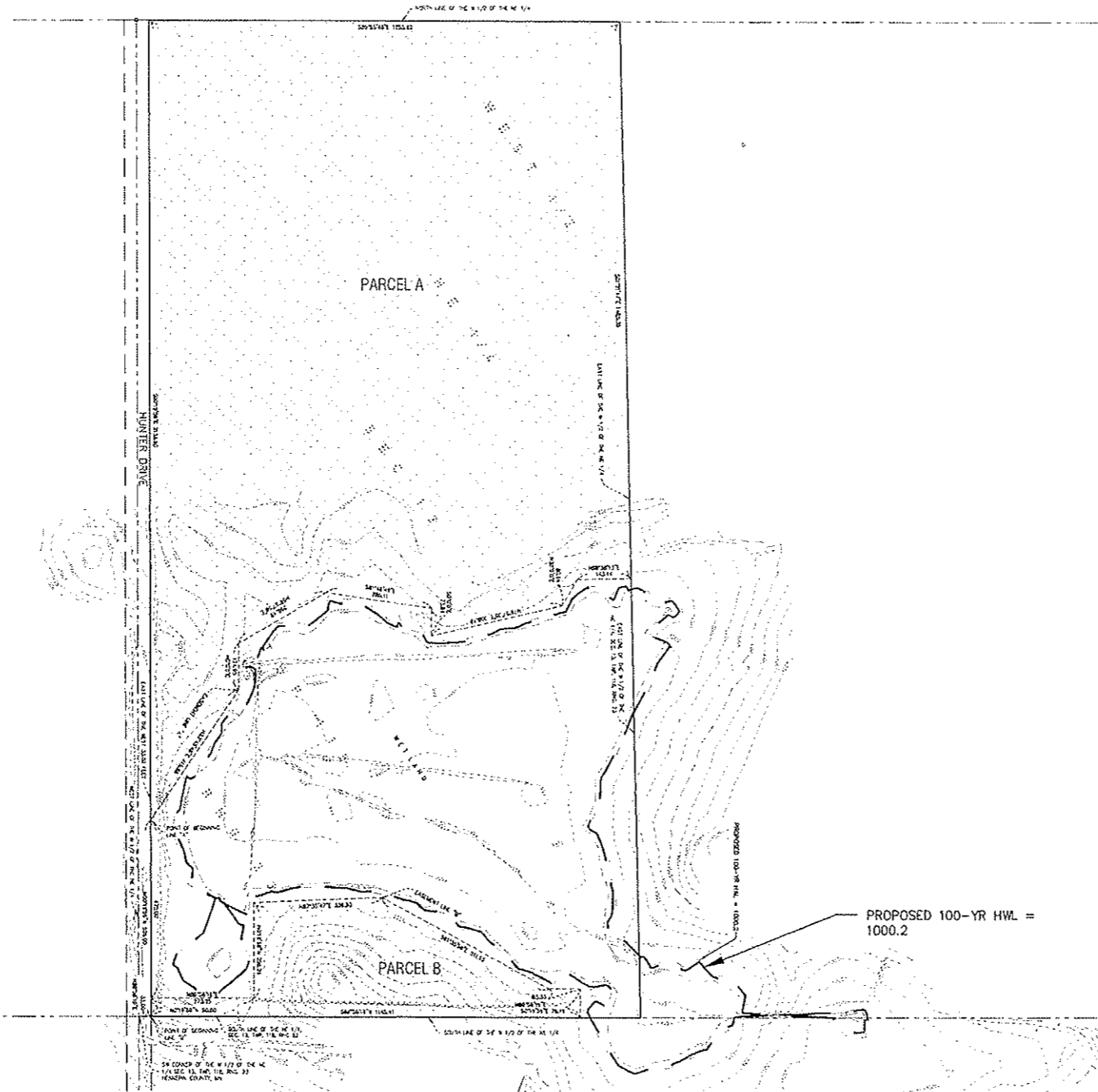
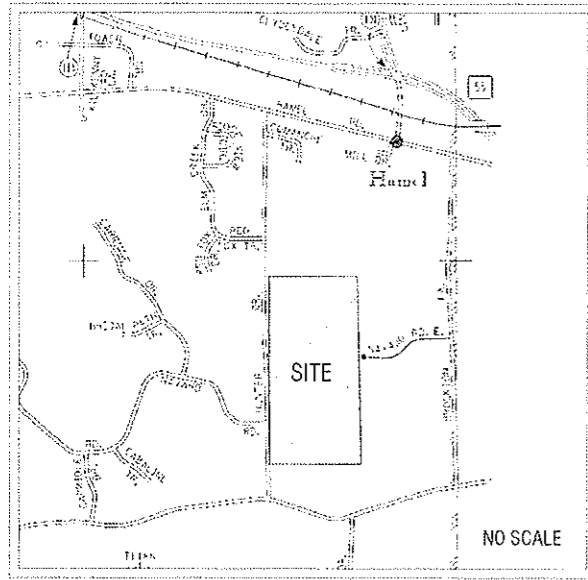


**VICINITY MAP**



**AREA TO BE REMOVED FROM FLOODPLAIN:**

**PARCEL A:**

That part of the West Half of the Northeast Quarter, except the West 33.00 feet thereof, Section 13, Township 118, Range 23, Hennepin County, Minnesota lying northerly, westerly and easterly of Line "A" described as follows:

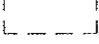
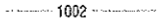
Commencing at the Southwest corner of said West Half of the Northeast Quarter; thence North 89 degrees 56 minutes 19 seconds East on an assumed bearing along the South line of said West Half of the Northeast Quarter, a distance of 33.00 feet; thence North 00 degrees 19 minutes 59 seconds West, a distance of 525.00 feet; to the point of beginning of the line to be described; thence North 33 degrees 45 minutes 46 seconds East, a distance of 419.86 feet; thence North 0 degrees 0 minutes 0 seconds East, a distance of 124.95 feet; thence North 59 degrees 27 minutes 58 seconds East, a distance of 266.49 feet; thence South 81 degrees 46 minutes 49 seconds East, a distance of 285.11 feet; thence South 0 degrees 0 minutes 0 seconds East, a distance of 73.84 feet; thence North 76 degrees 57 minutes 35 seconds East, a distance of 359.49 feet; thence North 30 degrees 0 minutes 0 seconds East, a distance of 80.94 feet; thence North 88 degrees 38 minutes 13 seconds East, a distance of 143.14 feet more or less to the East line of said West Half of the Northeast Quarter; thence North 01 degree 21 minutes 47 seconds West along said East line, a distance of 1465.35 feet to the North line of said West Half of the Northeast Quarter; thence North 89 degrees 55 minutes 48 seconds West along said North line, a distance of 1255.92 feet; thence South 0 degrees 19 minutes 59 seconds East, a distance of 2135.90 feet to the point of beginning.

**PARCEL B:**

That part of the West Half of the Northeast Quarter, except the West 33.00 feet thereof, Section 13, Township 118, Range 23, Hennepin County, Minnesota lying easterly, southerly and westerly of Line "B" described as follows:

Commencing at the Southwest corner of said West Half of the Northeast Quarter; thence North 89 degrees 56 minutes 19 seconds East on an assumed bearing along the South line of said West Half of the Northeast Quarter, a distance of 33.00 feet to the point of beginning of the line to be described; thence North 00 degrees 19 minutes 59 seconds West, a distance of 50.00 feet; thence North 89 degrees 56 minutes 19 seconds East, a distance of 273.25 feet; thence North 0 degrees 19 minutes 59 seconds West, a distance of 256.29 feet; thence North 87 degrees 35 minutes 47 seconds East, a distance of 339.90 feet; thence South 61 degrees 35 minutes 59 seconds East, a distance of 511.95 feet; thence North 89 degrees 56 minutes 19 seconds East, a distance of 83.33 feet; thence South 0 degrees 19 minutes 59 seconds East, a distance of 76.19 feet more or less to the South line of said West Half of the Northeast Quarter; thence South 89 degrees 56 minutes 19 seconds West along said South line, a distance of 1145.41 feet to the point of beginning.

**LEGEND**

-  AREA TO BE REMOVED FROM FLOODPLAIN
-  1002 EXISTING CONTOUR (FROM SURVEY DATA)

**BENCHMARKS**

1. TOP CASTING OF CATCH BASIN WEST SIDE OF HUNTERS RD. AND APPROXIMATELY 770 FEET NORTH OF NAVAJO ROAD. ELEVATION= 1002.29 FEET (NGVD 1929)
2. SOUTH INVERT OF CMP UNDER DRIVEWAY 60 FEET SOUTHERLY OF SOUTHWEST CORNER OF PROPERTY SURVEYED. ELEVATION= 1004.65 FEET (NGVD 1929)

8/25/08

I hereby certify that this plan, specification or report was prepared by me or under my direct supervision and that I am a duly Licensed Professional ENGINEER under the laws of the State of Minnesota.

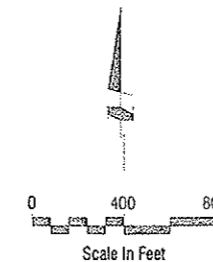
**Adam T. Parker**  
Registration No. 42733 Date: 08/25/2008

If applicable, contact us for a wet e-signed copy of this plan which is available upon request at McCombs Frank Roos Associates, Inc., Plymouth, MN office.

**MAP PANELS AFFECTED:**

- 27053C0166E
- 27053C0167E
- 27053C0168E
- 27053C0169E

COMMUNITY: CITY OF MEDINA  
COMMUNITY ID: 270171



**Exhibit C - Area To Be Removed From Floodplain  
Medina, MN**

Engineering • Planning • Surveying  
**MFRA**  
14800 28th Avenue North, Suite 140  
Plymouth • Minnesota • 55447  
phone: 763/476-6010  
fax: 763/476-8532  
website: www.mfra.com  
McCombs Frank Roos Associates, Inc.